

Multistripper

Table of contents:

- User guide for operator
- Safety
- Technical specifications
- Repair and Maintenance

Manufacturer: JKA Maskiner, Vævergangen 34, DK-2690 Karlslunde.

Phone: +45 4615 3435 Fax: +45 4615 3160 email: info@gulvmaskiner.dk

Declaration of Conformity

This Multistripper is constructed and manufactured in conformity with the provisions of

The EC machinery Directive 98/37/EF and as of the 29th September 2009, the provisions of the Machinery Directive 2006/42/EF and the Low Voltage Directive 2006/95/EF

Standards: DS/EN ISO 3744 and DS/EN ISO 5349-1:2001

Place: Karlslunde

Date:

Signature:

User Guide for Operator

The Multistripper is used to cut loose glued down flooring materials (Lino, Vinyl, carpet etc.) from the underlay. It works by means of a blade that by eccentric drive vibrates into the glue joint. The Multistripper is self propelled and it is not necessary to force it into the glue joint. The machine is equipped with neutral gear allowing it to be used manually for removal of left over flooring material etc. The Multistripper is for indoor use only and must not be cleaned by use of a high pressure cleaner (water). This will lead to corrosion of the ball bearings and the transmission. When starting up always check that the blade is sharp, if not, the power supply for the machine must be switched off before changing the blade. The blade is mounted by use of 4 Unbrako socket screws. The screws are loosened with the Allen key. Switch on the power supply and the vibration will start. Take the gear handle down and the machine will move forward.

Which Blade should I choose?

The most common blade is the Normal blade used on all types of flooring material. It is necessary to cut the carpet into long pieces before use. Mounted with bevel facing upwards.

Type 103201 Normal blade 320 mm.

If the flooring material is difficult to remove and the blade has a tendency to slip, the Aggressive blade with a 15 degree bend may be the solution.

Type 103203 Aggressive blade 320 mm.

The three- edged blade with self –scoring corners. No need to pre-cut carpet into long pieces. It can be used on all flooring materials, however, not suitable for use on loop carpets. When removing flooring materials that are particularly difficult to remove, the width of the cut can be adjusted without stopping to 2/3 or ½. This is very useful.

Type 103202 three- edged blade 355

Safety

The Multistripper is only for indoor use on glued down flooring materials, not for use on outdoor roofing felt or the like, the Warranty will cease to apply in this case.

Always unplug from the main power supply when changing the blade or when not in use. The machine is equipped with a no voltage release switch. In case of loss of mains voltage it ensures that the power is cut off and that the machine does not start once mains voltage is back on.

The noise level of the Multistripper has been measured in accordance with ISO 3744 at 83db. at the ear of the operator. The use of ear defenders is recommended.

The mechanical vibration level of the machine has been measured in accordance with ISO 5349-1:2001 at Ahw=5.7 m/s. Maximum daily exposure 1.5 hours including breaks 6.2 hours.

Abnormal noise when idle may be caused by a worn ball bearing. This should be replaced as soon as possible in order to prevent any breaking of the blade holder due to fatigue.

Transport and removal of the Multistripper can be happen in the following ways: if manually lifting the machine, it is advisable that two persons lift simultaneously. By using a ramp one person can load the machine. If lifting the machine mechanically by use of a crane.

Technical specifications

Motor: AC standard motor, surface cooled, 110 volts, 11.5 Amp. 750 watt, 2800 rpm

Blade: Rocker-mounted, blade width 32 cm

Clutch: Mechanical

Measurements:

Height: 90 cm

Width: 34 cm

Length: 100 cm

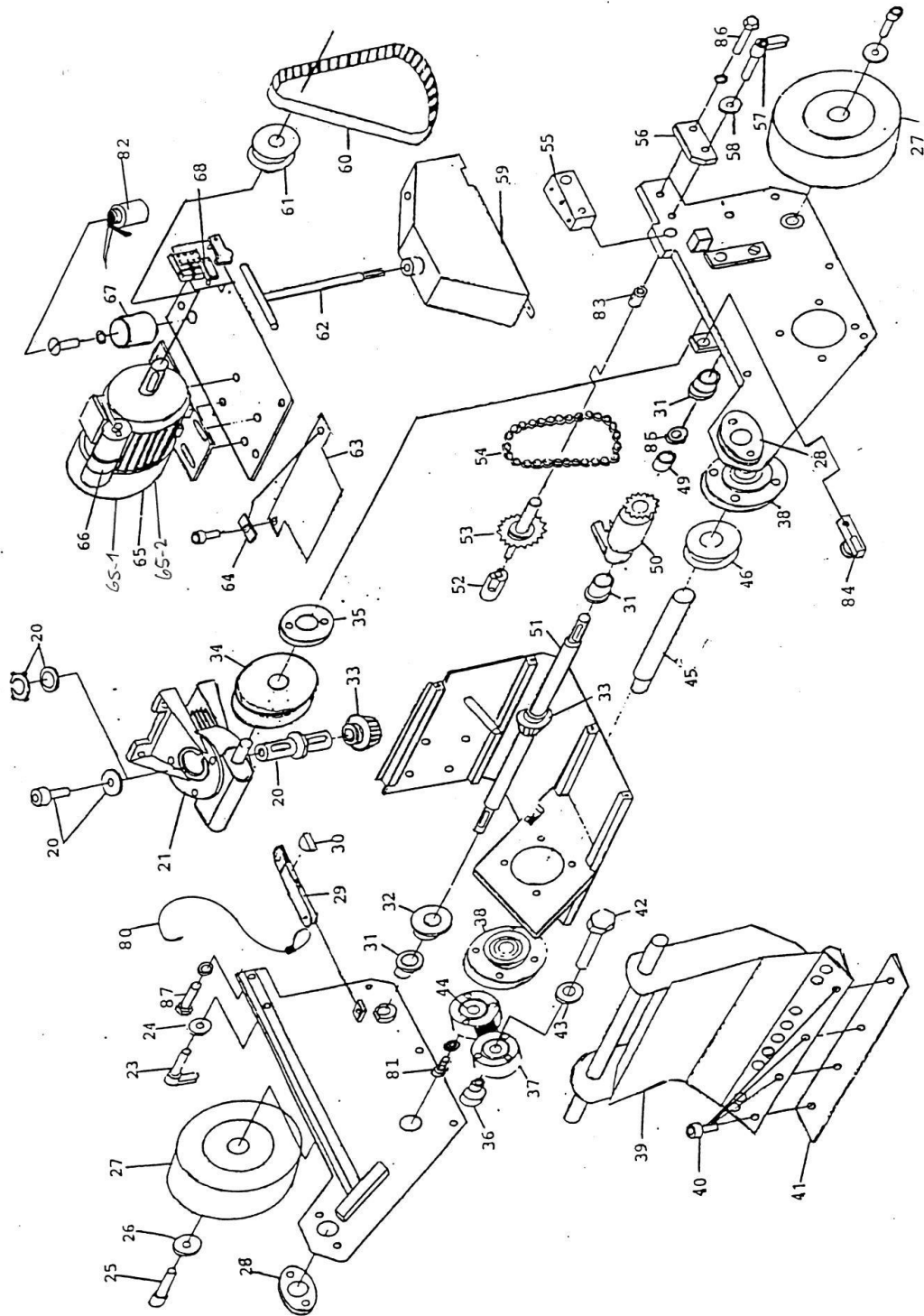
Weight: 70 kg

CE sign

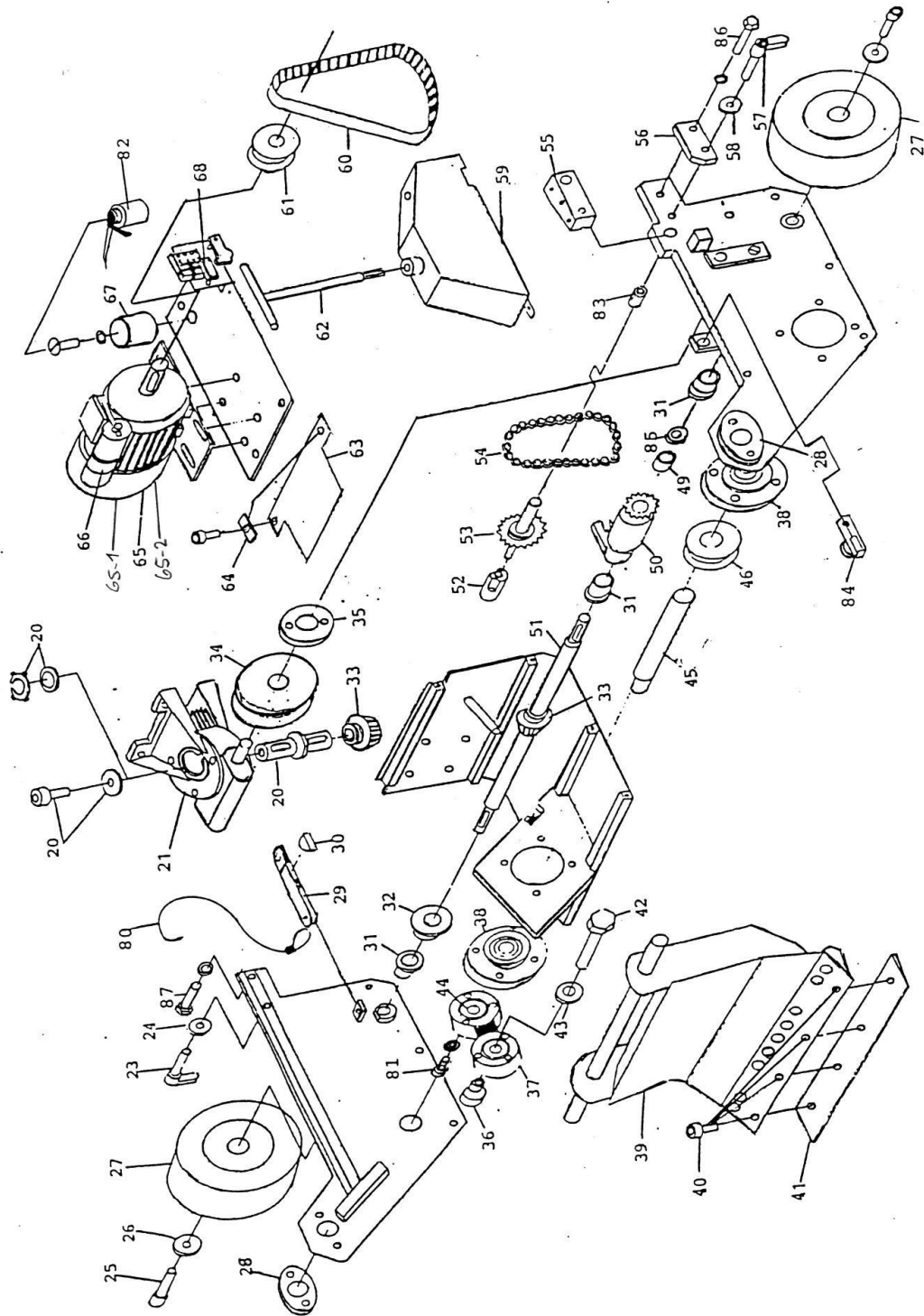
Repair and Maintenance

The machine should be lubricated every day, the arrows marked locations (5 places).

Use a thin machine oil or a year-round engine oil 15W-40



MULTISTRIPPER



MULTISTRIPPER

Multistripper parts list

Position	Part No	Description
1	32001	Connecting arm
2	32002	Coupling rod
4	32004	Pressure spring
5	32005	Gear glider
6	32006	Gear arm
7	32007	Ball knob
8	32008	Pressure spring
9	32009	Stop ring for pressure spring
11	32011	Bearing block with bearing
12	32012	Nylon bearing 12x16x30
13	32013	Gear locking plate
14	32014	Shim
V-15	32015	Rubber handle
V-10-A	32015-1	Vibration handle, upper
V-10-B	32015-2	Vibration handle, lower
V-16	32016-2	Power switch CA10
V-77	32016-3	Coupling
V-17	32017	Cable strain relief PVC
18	32018-2	Rubber cable+plug
19	32019	Blade magazine
V-78	32078	Vibration damper
V-79	32079	Locking bush
20	32020	Gear shaft
21	32021	Gear VF44 1:70 (-31.04.08)
21	32022	Gear VF44 1.60 (01.05.08-)
23	32023	Clamping grip M10, right
24	32024	Retaining washer Ø10
25	32025	Insex Bolt M5x20
26	32026	Retaining washer Ø6
27	32027	Wheel
28	32028	Bearing SNR FD204
29	32029	Neutral gear arm
30	32030	Crescent
31	32031	Nylon bearing 20x25 with sleeve
32	32032	Neutral gear disc
33	32033	Tapered gear wheel (pair)
34	32034	Toothed belt pulley 36 t.
35	32035	Bearing SAFD204
36	32036	Bearing shank/Bushing
37	32037	Double bearing house
38	32038	Bearing SNR FCE204
39	32039	Front part
40	32040	Insex bolts 6x12

41	32041	Clamping rail
42	32042	Bolt for bearing shank
43	32043	Bevel-edged washer M12
44	32044	Bearing 6203
45	32045	Eccentric shaft
46	32046	Toothed belt pulley 16 t. Ø20
49	32049	Oil bronze bearing 20x25
50	32050	Coupling screw
51	32051	Wheel bearing
52	32052	Program disc
53	32053	Chain wheel 26 t.
54	32054	Chain 8 mm.
55	32055	Gear stop
56	32056	Backstop
57	32057	Clamping grip M10, left
58	32058	Retaining washer Ø10
59	32059	Guard complete
60	32060	Toothed belt
61	32061	Toothed belt pulley 16 t. Ø19
62	32062	T-key
63	32063	T-plate
64	32064	Shim
65	32065	Motor complete
66	32066	Capacitator
67	32067	Oil can holder
68	32068	Micro switch
80	32080	Neutral gear wire
81	32081	Insex bolt M5x16
82	32082	Oil can
83	32083	Oil bronze bearing 12x16
84	32084	Pulley holder + pulley
85	32085	Supporting disc Ø20
86	32086	M10 bolt 50 mm.
87	32087	M10 bolt 45 mm.
90	32090	Chain adjuster
92	32092	Coupling
94	32094	Rubber splash guard
95	32095	Angle plate for splash guard